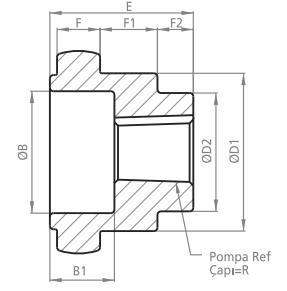
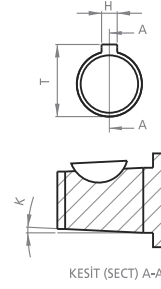
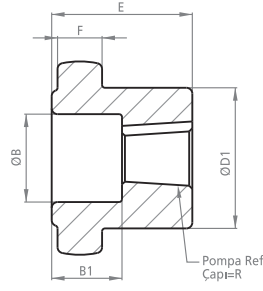




KAPLIN

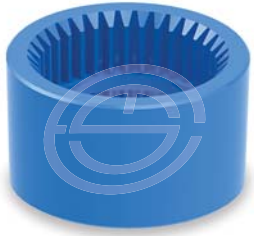
COUPLING

DK28

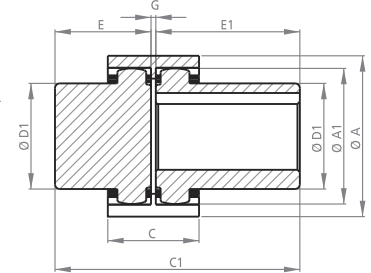
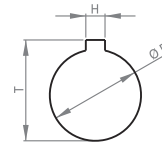
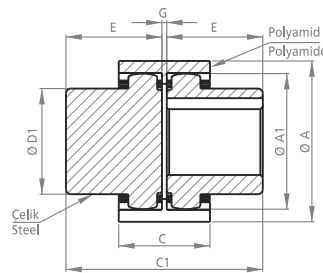
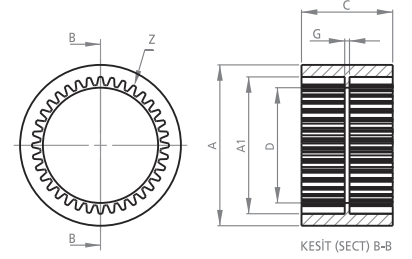


POMPA MİLİNE GÖRE İŞLENMİŞ KAPLINLER PROCESSED COUPLINGS PUMP SHAFT

KOD CODE	B	B1	D1	D2	E	F	F1	F2	H	K	R	T	Z
DK280PD03	-	-	43.70	-	40	12	-	-	3.20	-	13.45	15.05	36
DK28-G2B-03	-	-	43.70	-	40	12	-	-	3.00	-	12.50	14.00	36
DK280PK03	22	28	43.70	31	40	12	15	11	2.50	1/8	9.50	10.75	36
DK2811303	34	18	43.70	29	40	12	16	10	3.20	1/5	17.00	18.60	36
DK2811703	34	18	43.70	30	40	12	16	10	3.20	1/8	15.00	16.60	36
DK28-1P-03	34	18	43.70	33	40	12	16	10	4.00	1/8	16.66	18.66	36
DK28-1P-03T	34	18	43.70	33	40	12	16	10	3.20	1/8	16.66	18.26	36
DK282PK03	34	13	43.70	-	40	12	-	-	4.00	1/8	21.59	23.60	36
DK282PD03	-	-	43.70	-	40	12	-	-	6.35	-	22.15	25.35	36
DK28-SAE-A-03	-	-	43.70	-	40	12	-	-	5.00	-	19.05	21.55	36



KOD CODE	A	A1	C	D	G	Z
DK2802	67	57	38	47	5	36



MOTOR MİLİNE GÖRE İŞLENMİŞ KAPLINLER PROCESSED COUPLINGS MOTOR SHAFT

KOD CODE	A	A1	C	C1	D	D1	E	E1	G	H	T	Z
DK2803	67	56.5	40	82	-	43.7	40	-	2	-	-	36
DK281103	67	56.5	40	82	11	43.7	40	-	2	4	13	36
DK281403	67	56.5	40	82	14	43.7	40	-	2	5	16.5	36
DK281903	67	56.5	40	82	19	43.7	40	-	2	6	22	36
DK282403	67	56.5	40	82	24	43.7	40	-	2	8	28	36
DK282503	67	56.5	40	82	25	43.7	40	-	2	8	29	36
DK282803	67	56.5	40	82	28	43.7	40	-	2	8	32	36
UDK2803	67	56.5	40	102	-	43.7	40	60	2	-	-	36
UDK281903	67	56.5	40	102	19	43.7	40	60	2	6	22	36
UDK282403	67	56.5	40	102	24	43.7	40	60	2	8	28	36
UDK282503	67	56.5	40	102	25	43.7	40	60	2	8	29	36
UDK282803	67	56.5	40	102	28	43.7	40	60	2	8	32	36

Motor Mil Çapları için sayfa 26'ya bakınız.
Look at the paper 26 for Motor Shaft Diameters.

TOLERANSLAR MİL ÖLÇÜLERİNDE: -0 +0.05 , DİĞER ÖLÇÜLERDE: ±0.15
TOLERANCES SHAFT DIMENSIONS: -0 +0.05 , OTHER DIMENSIONS: ±0.15

Tasarım Tescil No Design Registration Certificate Number: 2001 01950