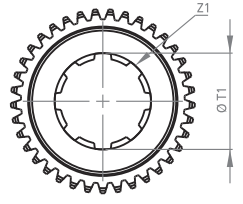
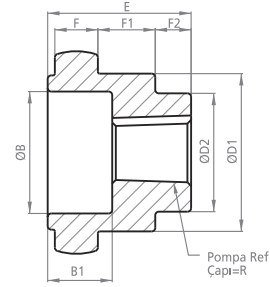
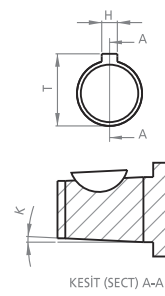
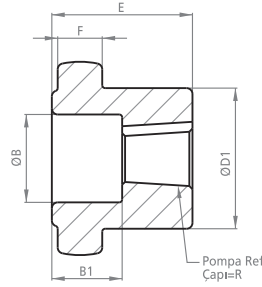




KAPLIN

COUPLING

DK38

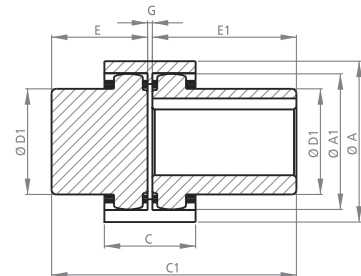
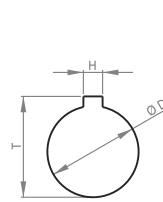
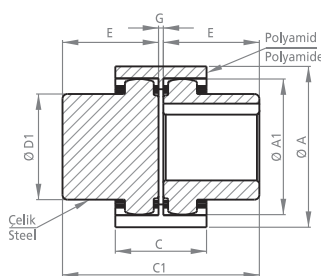
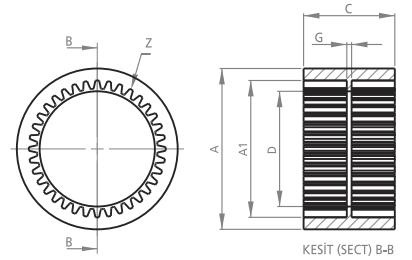


POMPA MİLİNE GÖRE İŞLENMİŞ KAPLINLER PROCESSED COUPLINGS PUMP SHAFT

KOD CODE	B	B1	D1	D2	E	F	F1	F2	H	K	R	T	T1	Z	Z1
DK38-1P03	37	20	58	35	42	14.5	15	10	4.00	1/8	16.66	18.66	-	37	-
DK38-1P03T	37	20	58	35	42	14.5	15	10	3.20	1/8	16.66	18.26	-	37	-
DK382PK03	37	15	58	-	42	14.5	-	-	4.00	1/8	21.59	23.60	-	37	-
DK382PD03	-	-	58	-	42	14.5	-	-	6.35	-	22.15	25.35	-	37	-
DK38-11303	37	20	58	29	42	14.5	15	10	3.20	1/5	17.00	18.60	-	37	-
DK38-SAE-A-03	-	-	58	-	42	14.5	-	-	5.00	-	19.05	21.55	-	37	-
DK383PD	-	-	58	-	42	14.5	-	-	8.00	-	31.75	35.75	-	37	-
DK3813F-03	-	-	58	-	42	14.5	-	-	-	-	-	-	21.80	37	13
DK3813F-1-03	-	-	58	-	42	14.5	-	-	-	-	-	-	22.20	37	13
DK3815F-03	-	-	58	-	42	14.5	-	-	-	-	-	-	25.20	37	15
DK3814F-1-03	-	-	58	-	42	14.5	-	-	-	-	-	-	29.85	37	14
DK3814F-2-03	-	-	58	-	42	14.5	-	-	-	-	-	-	30.00	37	14
DK3814F-3-03	-	-	58	-	42	14.5	-	-	-	-	-	-	31.70	37	14
DK3814F-4-03	-	-	58	-	42	14.5	-	-	-	-	-	-	27.25	37	14
DK388F-03	-	-	58	-	42	14.5	-	-	-	-	-	-	36.10	37	8
DK3818F-03	-	-	58	-	42	14.5	-	-	-	-	-	-	39.70	37	18



KOD CODE	A	A1	C	D	G	Z
DK3802	84	70	47	58	7	37



MOTOR MİLİNE GÖRE İŞLENMİŞ KAPLINLER PROCESSED COUPLINGS MOTOR SHAFT

KOD CODE	A	A1	C	C1	D	D1	E	E1	G	H	T	Z
DK3803	84	69	47	86	-	58	42	-	2	-	-	37
DK381903	84	69	47	86	19	58	42	-	2	6	22	37
DK382403	84	69	47	86	24	58	42	-	2	8	28	37
DK382803	84	69	47	86	28	58	42	-	2	8	32	37
DK383803	84	69	47	86	38	58	42	-	2	10	43	37
UDK3803	84	69	47	106	-	58	42	62	2	-	-	37
UDK381903	84	69	47	106	19	58	42	62	2	6	22	37
UDK382403	84	69	47	106	24	58	42	62	2	8	28	37
UDK382803	84	69	47	106	28	58	42	62	2	8	32	37
UDK383803	84	69	47	106	38	58	42	62	2	10	43	37

TOLERANSLAR MİL ÖLÇÜLERİNDE: -0 +0.05, DİĞER ÖLÇÜLERDE: ±0.15
TOLERANCES SHAFT DIMENSIONS: -0 +0.05, OTHER DIMENSIONS: ±0.15

Tasarım Tescil No Design Registration Certificate Number: 2001 01950

Motor Mil Çapları için
sayfa 26'ya bakınız.
Look at the paper 26 for
Motor Shaft Diameters.