

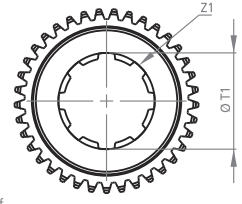
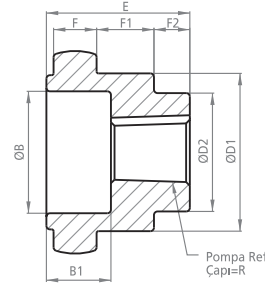
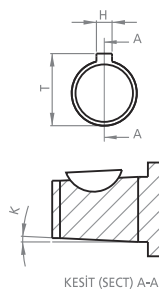
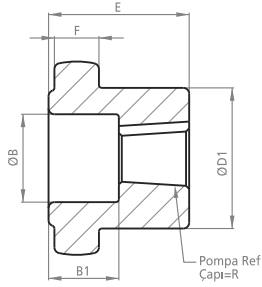


KAPLIN

COUPLING

DK50-B

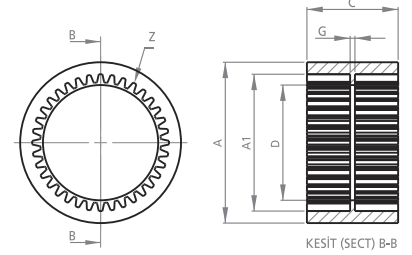
Khazini®

**POMPA MİLİNE GÖRE İŞLENMİŞ KAPLINLER**
PROCESSED COUPLINGS PUMP SHAFT

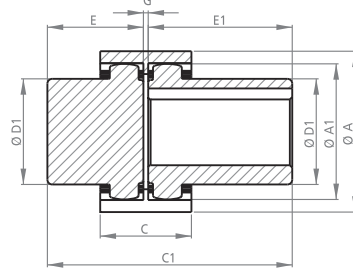
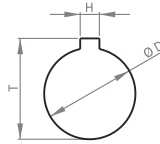
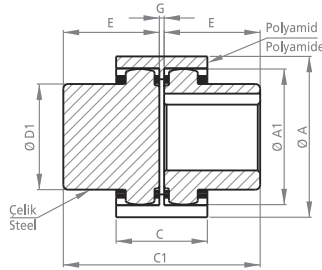
KOD CODE	B	B1	D1	D2	E	F	F1	F2	H	K	R	T	T1	Z	Z1
DK50-B103	51	28	71	35	50	16	20	10	3.20	1/8	17.31	18.91	-	40	-
DK50-B203	40	23	71	48	-	-	20	10	4.00	1/8	21.77	23.77	-	40	-
DK50-B303	40	17	71	48	-	-	20	10	4.00	1/8	25.32	27.32	-	40	-
DK50-B1P03	48	25	71	35	-	-	20	9	4.00	1/8	16.66	18.66	-	40	-
DK50-B1P03T	48	25	71	35	-	-	20	9	3.20	1/8	16.66	18.26	-	40	-
DK50-B2PK03	47	20	71	-	-	-	-	-	4.00	1/8	21.59	23.60	-	40	-
DK50-B2PD03	-	-	71	-	-	-	-	-	6.35	-	22.15	25.35	-	40	-
DK50-B-SAE-A03	-	-	71	-	-	-	-	-	5.00	-	19.05	21.55	-	40	-
DK50-B3PD	-	-	71	-	-	-	-	-	8.00	-	31.75	35.75	-	40	-
DK50-B25-03	-	-	71	-	-	-	-	-	5.00	-	25.40	27.90	-	40	-
DK50-B13F-03	-	-	71	-	-	-	-	-	-	-	-	-	21.80	40	13
DK50-B13F-1-03	-	-	71	-	-	-	-	-	-	-	-	-	22.20	40	13
DK50-B15F-03	-	-	71	-	-	-	-	-	-	-	-	-	25.20	40	15
DK50-B14F-1-03	-	-	71	-	-	-	-	-	-	-	-	-	29.85	40	14
DK50-B14F-2-03	-	-	71	-	-	-	-	-	-	-	-	-	30.00	40	14
DK50-B14F-3-03	-	-	71	-	-	-	-	-	-	-	-	-	31.70	40	14
DK50-B8F-03	-	-	71	-	-	-	-	-	-	-	-	-	36.10	40	8
DK50-B18F-03	-	-	71	-	-	-	-	-	-	-	-	-	39.70	40	18



KOD CODE	A	A1	C	D	G	Z
DK50-B02	102	86	62	55	5	40



KESİT (SECT) B-B

**MOTOR MİLİNE GÖRE İŞLENMİŞ KAPLINLER**
PROCESSED COUPLINGS MOTOR SHAFT

KOD CODE	A	A1	C	C1	D	D1	E	E1	G	H	T	Z
DK50-B03	102	84	62	105	-	68	50	-	5	-	-	40
DK50-B1903	102	84	62	105	19	68	50	-	5	6	22	40
DK50-B2403	102	84	62	105	24	68	50	-	5	8	28	40
DK50-B2803	102	84	62	105	28	68	50	-	5	8	32	40
DK50-B3803	102	84	62	105	38	68	50	-	5	10	43	40
DK50-B4203	102	84	62	105	42	68	50	-	5	12	47	40
DK50-B4803	102	84	62	105	48	68	50	-	5	14	53	40
UDK50-B03	102	84	62	122	-	68	50	67	5	-	-	40
UDK50-B2803	102	84	62	122	28	68	50	67	5	8	32	40
UDK50-B3803	102	84	62	122	38	68	50	67	5	10	43	40
UDK50-B4203	102	84	62	122	42	68	50	67	5	12	47	40
UDK50-B4803	102	84	62	122	48	68	50	67	5	14	53	40

Motor Mil Çapları için
sayfa 26'ya bakınız.
Look at the paper 26 for
Motor Shaft Diameters.