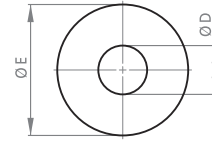


Tip 1 / Type 1



Tip 2 / Type 2

## 0 K KAMPANA SERİSİ - GRUP 1

## 0 K BELLHOUSING SERIES - GROUP 1

KOD CODE	P	TİP TYPE	N	H	H1	D	D1	D2	D3	B	B1	E	E1
0K 140	140	1	95	72	5.5	25.5	115	10.5	92	52.5	72	85	100
0K 160	160	1	110	80	6	25.5	130	10.5	105	52.5	72	85	100
0K 200	200	1	130	100	6.5	25.5	165	13	127	52.5	72	85	100
0K 250	250	1	180	115	7	25.5	215	15	170	52.5	72	85	100

## 1 K KAMPANA SERİSİ - GRUP 2

## 1 K BELLHOUSING SERIES - GROUP 2

KOD CODE	P	TİP TYPE	N	H	H1	D	D1	D2	D3	B	B1	E	E1
1K 160	160	1	110	80	6	36.66	130	10.5	105	71.42	96.18	90	118
1K 200	200	1	130	100	6.5	36.66	165	13	127	71.42	96.18	90	118
1K 250	250	1	180	115	7	36.66	215	15	170	71.42	96.18	90	118
1K 300	300	1	230	135	7	36.66	265	15.5	215	71.42	96.18	90	118
1K 350	350	1	250	170	9	36.66	300	19	225	71.42	96.18	90	118

## 2 K KAMPANA SERİSİ - GRUP 3

## 2 K BELLHOUSING SERIES - GROUP 3

KOD CODE	P	TİP TYPE	N	H	H1	D	D1	D2	D3	B	B1	E	E1
2K 200	200	1	130	100	6.5	50.77	165	13	127	98.56	128	118	151
2K 250	250	1	180	115	7	50.77	215	15	170	98.56	128	118	151
2K 300	300	1	230	135	7	50.77	265	15.5	215	98.56	128	118	151
2K 350	350	1	250	170	9	50.77	300	19	225	98.56	128	118	151
2K 400	400	2	300	210	8.5	50.77	350	19	292	98.56	128	230	-
2K 450230	450	2	350	230	11	50.77	400	19	355	98.56	128	240	-
2K 450290	450	2	350	290	11	50.77	400	19	360	98.56	128	250	-
2K 550230	550	2	450	230	11	50.77	500	19	445	98.56	128	240	-
2K 550290	550	2	450	290	11	50.77	500	19	450	98.56	128	260	-
2K 660	660	2	550	260	18	50.77	600	21	550	98.56	128	360	-

## 3 K KAMPANA SERİSİ - GRUP 4

## 3 K BELLHOUSING SERIES - GROUP 4

KOD CODE	P	TİP TYPE	N	H	H1	D	D1	D2	D3	B	B1	E	E1
3K 250	250	1	180	115	8.5	60.5	215	15	170	105.1	153.4	137	182
3K 300	300	1	230	135	8	60.5	265	15.5	215	105.1	153.4	137	182
3K 350	350	1	250	170	8.5	60.5	300	19	220	105.1	153.4	137	182
3K 400	400	2	300	210	9	60.5	350	19	292	105.1	153.4	230	-
3K 450230	450	2	350	230	11	60.5	400	19	355	105.1	153.4	240	-
3K 450290	450	2	350	290	11	60.5	400	19	360	105.1	153.4	250	-
3K 550230	550	2	450	230	11	60.5	500	19	445	105.1	153.4	240	-
3K 550290	550	2	450	290	11	60.5	500	19	450	105.1	153.4	260	-
3K 660	660	2	550	260	18	60.5	600	21	550	105.1	153.4	360	-

Motor Flans Çapları için  
sayfa 26'ya bakınız.  
Look at the page 26 for  
Flange Diameters of Engine