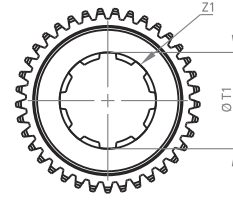
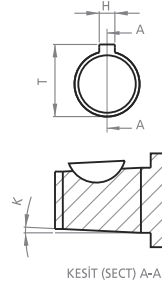
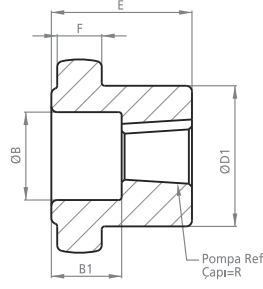




KAPLIN

COUPLING

DK60

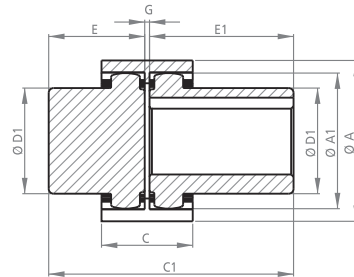
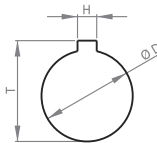
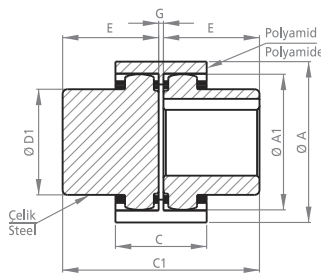
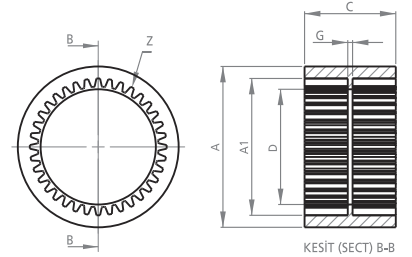


POMPA MİLİNE GÖRE İŞLENMİŞ KAPLINLER PROCESSED COUPLINGS PUMP SHAFT

KOD CODE	B	B1	D1	E	F	H	K	R	T	T1	Z	Z1
DK60-1P03	40	46	91	68	18	4.00	1/8	16.66	18.66	-	55	-
DK60-1P03T	40	46	91	68	18	3.20	1/8	16.66	18.26	-	55	-
DK602PK03	60	41	91	68	18	4.00	1/8	21.59	23.60	-	55	-
DK602PD03	-	-	91	68	18	6.35	-	22.15	25.35	-	55	-
DK60-SAE-A-03	-	-	91	68	18	5.00	-	19.05	21.55	-	55	-
DK603PD	-	-	91	68	18	8.00	-	31.75	35.75	-	55	-
DK6013F-03	-	-	91	68	18	-	-	-	-	21.80	55	13
DK6013F-1-03	-	-	91	68	18	-	-	-	-	22.20	55	13
DK6015F-03	-	-	91	68	18	-	-	-	-	25.20	55	15
DK6014F-1-03	-	-	91	68	18	-	-	-	-	29.85	55	14
DK6014F-2-03	-	-	91	68	18	-	-	-	-	30.00	55	14
DK6014F-3-03	-	-	91	68	18	-	-	-	-	31.70	55	14
DK6014F-4-03	-	-	91	68	18	-	-	-	-	27.25	55	14
DK608F-03	-	-	91	68	18	-	-	-	-	36.10	55	8
DK6018F-03	-	-	91	68	18	-	-	-	-	39.70	55	18



KOD CODE	A	A1	C	D	G	Z
DK6002	138	113	68	100	13.5	55



MOTOR MİLİNE GÖRE İŞLENMİŞ KAPLINLER PROCESSED COUPLINGS MOTOR SHAFT

KOD CODE	A	A1	C	C1	D	D1	E	E1	G	H	T	Z
DK6003	138	112.5	68	139.5	16	91	68	-	3.5	-	-	55
DK603803	138	112.5	68	139.5	38	91	68	-	3.5	10	43	55
DK604203	138	112.5	68	139.5	42	91	68	-	3.5	12	47	55
DK604803	138	112.5	68	139.5	48	91	68	-	3.5	14	53	55
DK605503	138	112.5	68	139.5	55	91	68	-	3.5	16	60	55
DK606003	138	112.5	68	139.5	60	91	68	-	3.5	18	66	55
UDK6003	138	112.5	68	156.5	16	91	68	85	3.5	-	-	55
UDK603803	138	112.5	68	156.5	38	91	68	85	3.5	10	43	55
UDK604203	138	112.5	68	156.5	42	91	68	85	3.5	12	47	55
UDK604803	138	112.5	68	156.5	48	91	68	85	3.5	14	53	55
UDK605503	138	112.5	68	156.5	55	91	68	85	3.5	16	60	55
UDK606003	3138	112.5	68	156.5	60	91	68	85	3.5	18	66	55

Motor Mil Çapları için
sayfa 26'ya bakınız.
Look at the paper 26 for
Motor Shaft Diameters.

Tasarım Tescil No Design Registration Certificate Number: 2001 01950