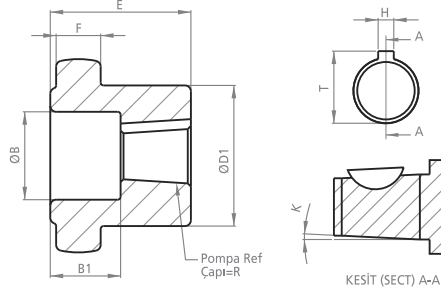




KAPLIN

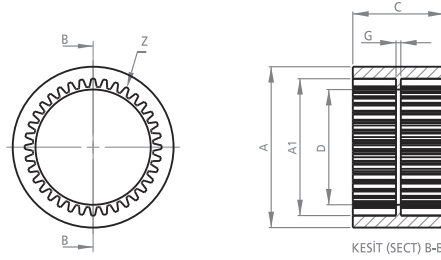
COUPLING

DK14

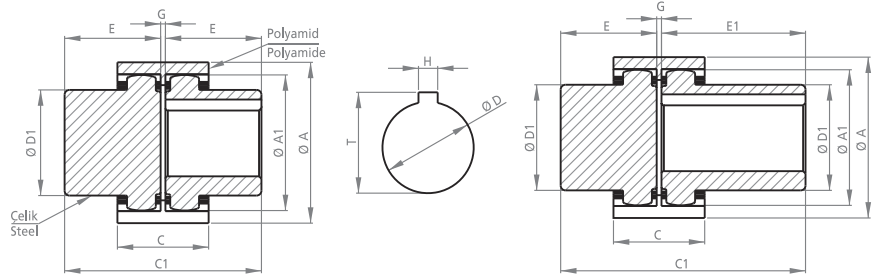


POMPA MİLİNE GÖRE İŞLENMİŞ KAPLINLER  
PROCESSED COUPLINGS PUMP SHAFT

KOD CODE	B	B1	D1	E	F	H	K	R	T	Z
DK140P03	15	12	24	24	7.6	2.5	1/8	9.5	10.75	20
DK141203	-	-	24	24	7.6	3	0	12	13.5	20



KOD CODE	A	A1	C	D	G	Z
DK1402	40	33	28	24	4	20



MOTOR MİLİNE GÖRE İŞLENMİŞ KAPLINLER  
PROCESSED COUPLINGS MOTOR SHAFT

KOD CODE	A	A1	D	D1	C	C1	E	E1	G	H	T	Z
DKP1403	40	32.5	-	23	28	41	20	-	1	-	-	20
DK1405	40	32.5	-	24	28	50	24	-	2	-	-	20
DK141103	40	32.5	11	24	28	50	24	-	2	4	13	20
DK141403	40	32.5	14	24	28	50	24	-	2	5	16.5	20
UDK1405	40	32.5	-	24	28	56	24	30	2	-	-	20
UDK141103	40	32.5	11	24	28	56	24	30	2	4	13	20
UDK141403	40	32.5	14	24	28	56	24	30	2	5	16.5	20

Motor Mil Çapları için  
sayfa 26'ya bakınız.  
Look at the paper 26 for  
Motor Shaft Diameters.

DKP: PLASTİK DİŞLİ DK: ÇELİK DİŞLİ  
DKP: PLASTIC GEAR DK: STEEL GEAR

TOLERANSLAR MİL ÖLÇÜLERİNDE: - 0 +0.05 , DİĞER ÖLÇÜLERDE: ±0.15  
TOLERANCES SHAFT DIMENSIONS : - 0 +0.05 , OTHER DIMENSIONS: ±0.15

Tasarım Tescil No Design Registration Certificate Number: 2001 01950