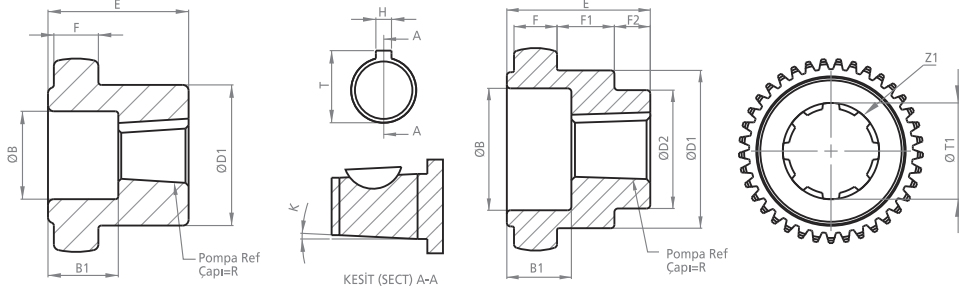
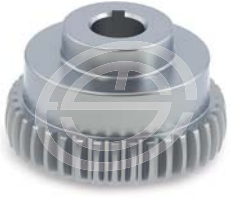


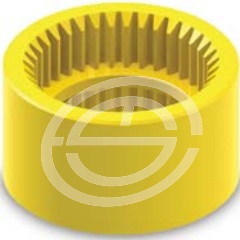


Khazini

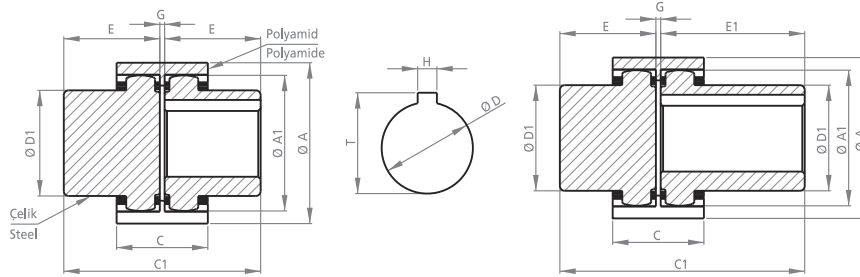
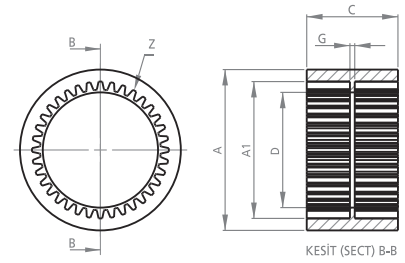


POMPA MİLİNE GÖRE İŞLENMİŞ KAPLINLER
PROCESSED COUPLINGS PUMP SHAFT

KOD CODE	B	B1	D1	D2	E	F	F1	F2	H	K	R	T	T1	Z	Z1
DK32-B	30	18	50	35	40	12	16	8	3.20	1/8	17.31	18.91	-	29	-
DK32-B11703	34	18	50	33	40	12	15.5	9.5	3.20	1/8	15.00	16.60	-	29	-
DK32-B1PK03	34	18	50	33	40	12	15.5	9.5	4.00	1/8	16.66	18.66	-	29	-
DK32-B1PK03 T	34	18	50	33	40	12	15.5	9.5	3.20	1/8	16.66	18.26	-	29	-
DK32-B2PK03	34	13	50	33	40	12	-	-	4.00	-	21.59	23.60	-	29	-
DK32-B2PD03	-	-	50	-	40	12	-	-	6.35	-	22.15	25.35	-	29	-
DK32-BSAE-A-03	-	-	50	-	40	12	-	-	5.00	-	19.05	21.55	-	29	-
DK32-B13F-03	-	-	50	-	40	12	-	-	-	-	-	-	21.80	29	13
DK32-B13F-1-03	-	-	50	-	40	12	-	-	-	-	-	-	22.20	29	13
DK32-B15F-03	-	-	50	-	40	12	-	-	-	-	-	-	25.20	29	15
DK32-B14F-1-03	-	-	50	-	40	12	-	-	-	-	-	-	29.85	29	14
DK32-B14F-2-03	-	-	50	-	40	12	-	-	-	-	-	-	30.00	29	14
DK32-B14F-3-03	-	-	50	-	40	12	-	-	-	-	-	-	31.70	29	14



KOD CODE	A	A1	C	D	G	Z
DK32-B	80	62.5	52	42	3	29



MOTOR MİLİNE GÖRE İŞLENMİŞ KAPLINLER
PROCESSED COUPLINGS MOTOR SHAFT

KOD CODE	A	A1	C	C1	D	D1	E	E1	G	H	T	Z
DK32-B03	80	62.5	52	83	-	50	40	-	3	-	-	29
DK32-B1903	80	62.5	52	83	19	50	40	-	3	6	22	29
DK32-B2403	80	62.5	52	83	24	50	40	-	3	8	28	29
DK32-B2803	80	62.5	52	83	28	50	40	-	3	8	32	29
DK32-B3203	80	62.5	52	83	32	50	40	-	3	8	36	29
UDK32-B03	80	62.5	52	103	-	50	40	60	3	-	-	29
UDK32-B1903	80	62.5	52	103	19	50	40	60	3	6	22	29
UDK32-B2403	80	62.5	52	103	24	50	40	60	3	8	28	29
UDK32-B2803	80	62.5	52	103	28	50	40	60	3	8	32	29
UDK32-B3203	80	62.5	52	103	32	50	40	60	3	8	36	29

Motor Mil Çapları için
sayfa 26'ya bakınız.
Look at the paper 26 for
Motor Shaft Diameters.