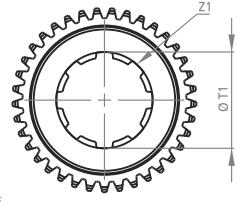
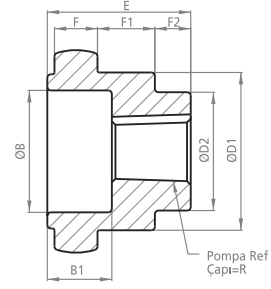
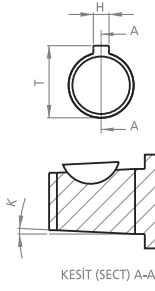
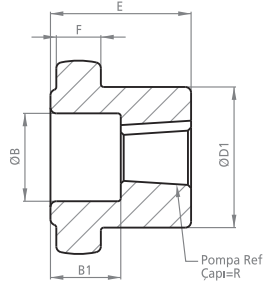




## KAPLIN

## COUPLING

## DK42-A

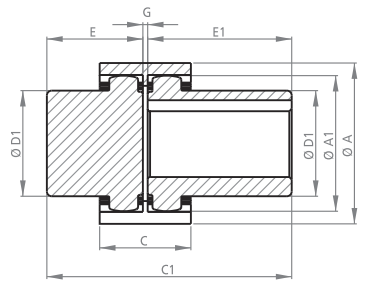
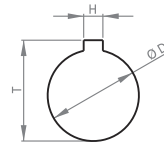
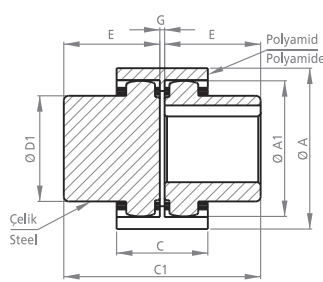
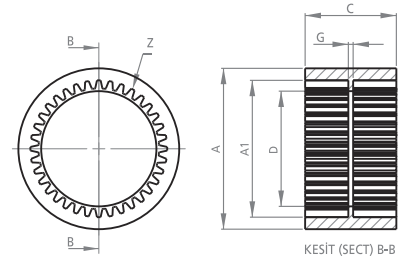


### POMPA MİLİNE GÖRE İŞLENMİŞ KAPLINLER PROCESSED COUPLINGS PUMP SHAFT

KOD CODE	B	B1	D1	D2	E	F	F1	F2	H	K	R	T	T1	Z	Z1
DK42-1P03A	37	20	60	35	42	14	15	10	4.00	1/8	16.66	18.66	-	44	-
DK42-1P03TA	37	20	60	35	42	14	15	10	3.20	1/8	16.66	18.26	-	44	-
DK422PK03A	37	15	60	-	42	14	-	-	4.00	1/8	21.59	23.60	-	44	-
DK422PD03A	-	-	60	-	42	14	-	-	6.35	-	22.15	25.35	-	44	-
DK4211303A	37	20	60	-	42	14	-	-	3.20	1/5	17.00	18.60	-	44	-
DK42-SAE-A-03A	-	-	60	-	42	14	-	-	5.00	-	19.05	21.55	-	44	-
DK423PDA	-	-	60	-	42	14	-	-	8.00	-	31.75	35.75	-	44	-
DK42-25-03A	-	-	60	-	42	14	-	-	8.00	-	25.40	29.40	-	44	-
DK4213F-03A	-	-	60	-	42	14	-	-	-	-	-	-	21.80	44	13
DK4213F-1-03A	-	-	60	-	42	14	-	-	-	-	-	-	22.00	44	13
DK4215F-03A	-	-	60	-	42	14	-	-	-	-	-	-	25.20	44	15
DK4214F-1-03A	-	-	60	-	42	14	-	-	-	-	-	-	29.85	44	14
DK4214F-2-03A	-	-	60	-	42	14	-	-	-	-	-	-	30.00	44	14
DK4214F-3-03A	-	-	60	-	42	14	-	-	-	-	-	-	31.70	44	14
DK4214F-4-03A	-	-	60	-	42	14	-	-	-	-	-	-	27.25	44	14
DK428F-03A	-	-	60	-	42	14	-	-	-	-	-	-	36.10	44	8
DK4218F-03A	-	-	60	-	42	14	-	-	-	-	-	-	39.70	44	18



KOD CODE	A	A1	C	D	G	Z
DK4202A	88	73.5	52	62	10	44



### MOTOR MİLİNE GÖRE İŞLENMİŞ KAPLINLER PROCESSED COUPLINGS MOTOR SHAFT

KOD CODE	A	A1	C	C1	D	D1	E	E1	G	H	T	Z
DK4203A	88	72.25	52	88	-	60	42	-	4	-	-	44
DK421903A	88	72.25	52	88	19	60	42	-	4	6	22	44
DK422403A	88	72.25	52	88	24	60	42	-	4	8	28	44
DK422803A	88	72.25	52	88	28	60	42	-	4	8	32	44
DK423803A	88	72.25	52	88	38	60	42	-	4	10	43	44
DK424203A	88	72.25	52	88	42	60	42	-	4	12	47	44
UDK4203A	88	72.25	52	108	-	60	42	62	4	-	-	44
UDK422403A	88	72.25	52	108	24	60	42	62	4	8	28	44
UDK422803A	88	72.25	52	108	28	60	42	62	4	8	32	44
UDK423803A	88	72.25	52	108	38	60	42	62	4	10	43	44
UDK424203A	88	72.25	52	108	42	60	42	62	4	12	47	44

TOLERANSLAR MİL ÖLÇÜLERİNDE: -0 +0,05, DİĞER ÖLÇÜLERDE: ±0,15  
TOLERANCES SHAFT DIMENSIONS: -0 +0,05, OTHER DIMENSIONS: ±0,15

Tasarım Tescil No Design Registration Certificate Number: 2001 01950

Motor Mil Çapları için  
sayfa 26'ya bakınız.  
Look at the paper 26 for  
Motor Shaft Diameters.